

A2. Weitere Datenanalysen (Additional data charts)

Entwicklung des Frauenanteils am wissenschaftlichen Personal in den Jahren 2000-2023 (GFZ ohne RIFS)
(Development of the ratio of women among scientific staff in the years 2000-2023; GFZ only without RIFS)

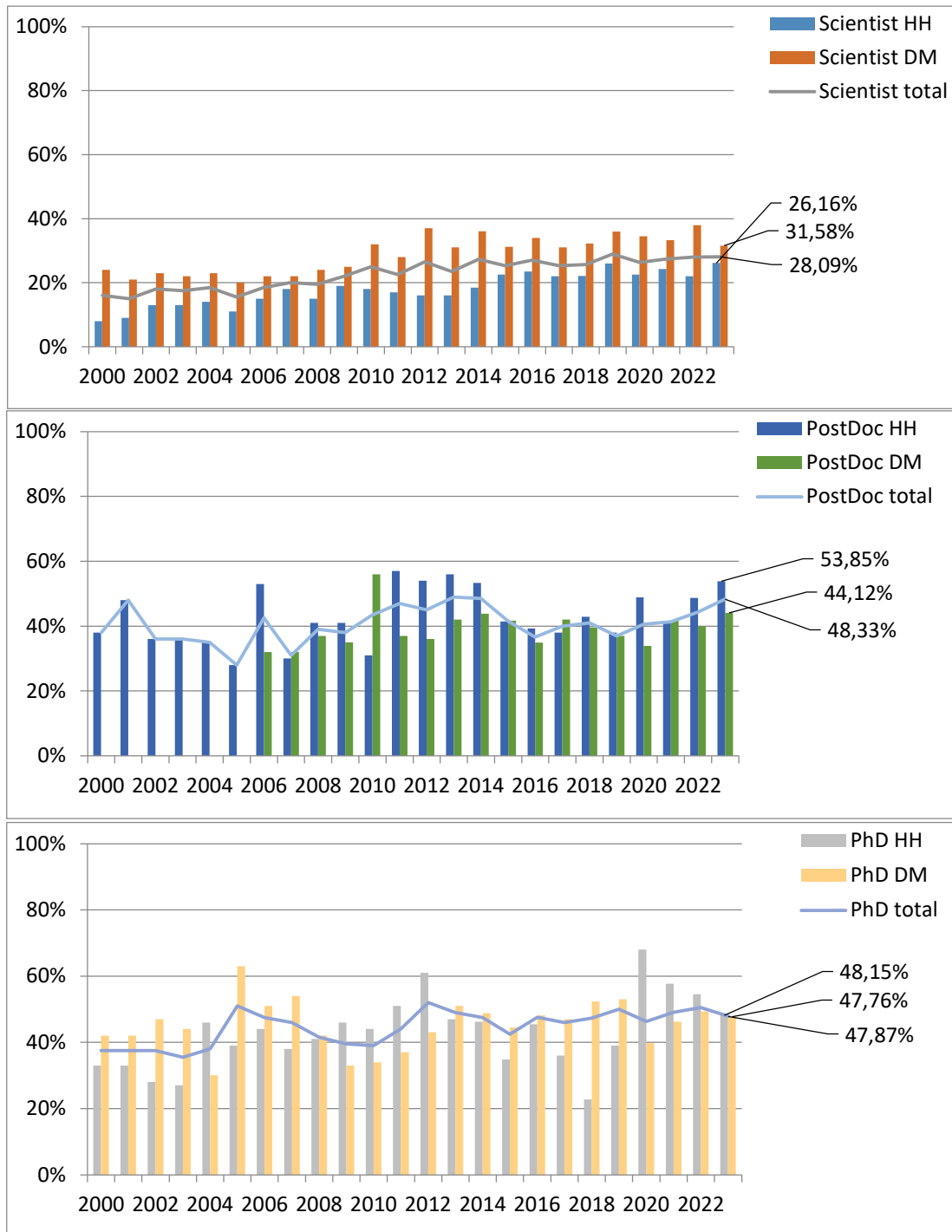


Figure 25 (3 graphs above) (GFZ without RIFS): Development of the proportion of women in science since 2000 (HH = budget-financed, DM = third-party funded). Data for the RIFS has only been available to the GFZ since 1.1.23 and is therefore not shown here.

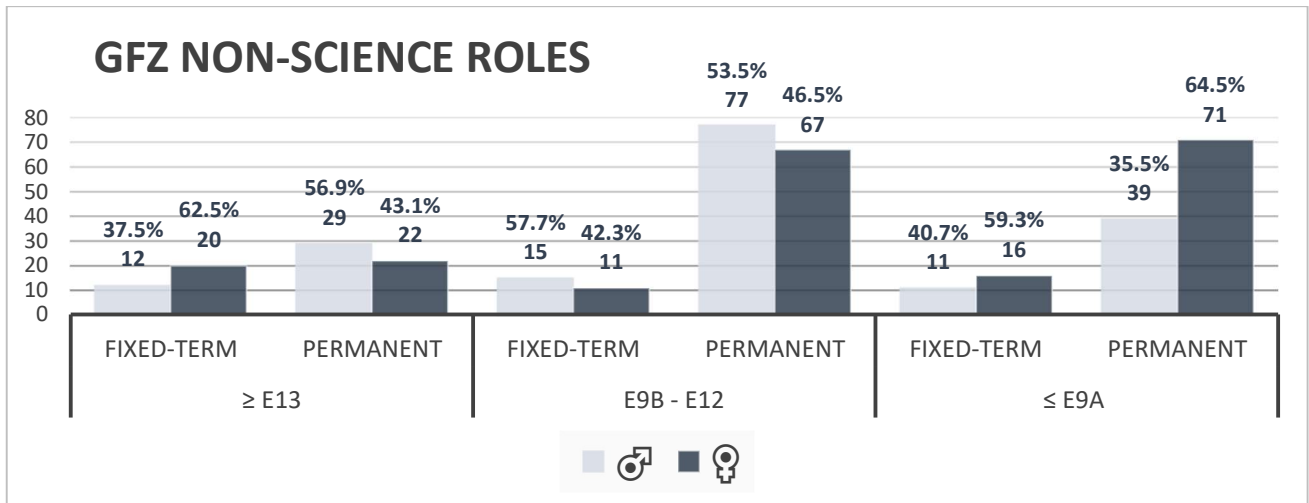


Figure 26 (GFZ without RIFS): Fixed-term employment in the non-scientific area

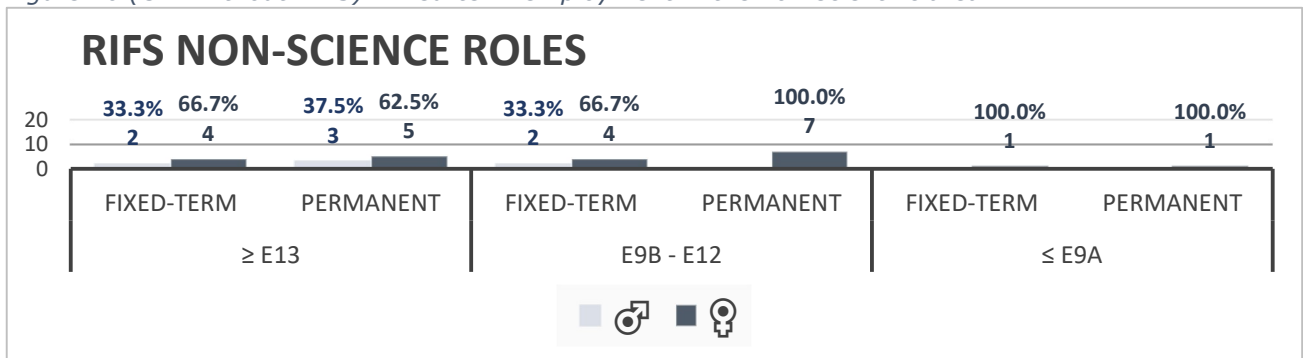


Figure 27 (RIFS): Fixed-term employment in the non-scientific area

Ergänzende Daten (GFZ ohne RIFS zum 31.01.2023) (Additional data; GFZ excl. RIFS; as of 31 January 2023)

Frauen am GFZ	Führungskraft		Scientist		PostDoc		PhD		Wiss. Administration		nicht-wiss. Personal		Summe
Haushalt	17.95%	7	26.16%	45	53.85%	14	48.15%	13	62.50%	5	50.63%	202	286
Drittmittel	0.00%	0	31.58%	30	44.12%	15	47.76%	32	87.50%	7	55.22%	37	121
gesamt		7		75		29		45		12		239	407

Table 1: Employee structure by type of financing (GFZ without RIFS as at 31.01.2023)

Altersverteilung GFZ	16 - 20		21 - 35		36 - 49		50 - 67		> 67		Summe
männlich	84.62%	11	51.30%	158	55.10%	189	62.64%	171	100.00%	5	
weiblich	15.38%	2	48.38%	149	44.90%	154	37.36%	102	0.00%	0	407
gesamt		13		308		343		273		5	942

Table 2: Employee structure by age (GFZ without RIFS as at 31.01.2023)

Wiss. Führungsebene GFZ	Vorstand		1. Ebene		2. Ebene		4. Ebene		Summe
männlich	0.00%	0	75.00%	3	81.82%	18	72.31%	47	
weiblich	100.00%	1	25.00%	1	18.18%	4	27.69%	18	24
gesamt		1		4		22		65	92

Table 3: Employee structure by hierarchy level (scientific area) (GFZ without RIFS as at 31.01.2023)

Wiss. Bereich GFZ	befristet		unbefristet		Summe
männlich	58.25%	173	79.03%	98	
weiblich	41.41%	123	20.97%	26	149
gesamt		297		124	421

Table 4: Employee structure in the scientific field in absolute figures (excluding management levels and scientific administration) (GFZ without RIFS as at 31.01.2023)

Nicht-wiss. Bereich GFZ	E13 und höher		E9b - E12		E5 - E9a und Kraftfahrer		Summe
männlich	49.40%	41	54.12%	82	36.50%	50	183
weiblich	50.60%	42	45.88%	78	63.50%	87	207
gesamt		83		170		137	390

Table 5: Employee structure in the non-scientific area (including scientific administration; excluding trainees, interns and assistants) (GFZ without RIFS as at 31.01.2023)

Nicht-wiss. Bereich GFZ	EG 13 und höher				EG 9b - EG 12				EG 5 - EG 9a				Summe
	befristet		unbefristet		befristet		unbefristet		befristet		unbefristet		
männlich	37.50%	12	56.86%	29	57.69%	15	53.47%	77	40.74%	11	35.45%	39	183
weiblich	62.50%	20	43.14%	22	42.31%	11	46.53%	67	59.26%	16	64.55%	71	207
gesamt	32		51		26		144		27		110		390

Table 6: Fixed-term employment in the non-scientific area (with scientific administration; without trainees, interns and assistants) (GFZ without RIFS as of 31.01.2023)

AZ in der Wissenschaft GFZ	Vollzeit				Teilzeit				Summe
	Scientist		PhD		Scientist		PhD		
männlich	72.10%	199	55.56%	5	47.06%	24	50.59%	43	271
weiblich	27.90%	77	44.44%	4	52.94%	27	48.24%	41	149
gesamt		276		9		51		85	421

Table 7: Part-time employment in the scientific field (excluding management levels and scientific administration) (GFZ without RIFS as at 31.01.2023)

AZ im nicht.- Wissenschafts- Bereich GFZ	Vollzeit						Teilzeit						Summe
	EG 13 und höher		EG 9b - EG 12		EG 5 - EG 9a		EG 13 und höher		EG 9b - EG 12		EG 5 - EG 9a		
männlich	55.56%	35	63.16%	84	43.27%	45	30.00%	6	21.62%	8	15.15%	5	183
weiblich	44.44%	28 3	36.84%	49	56.73%	59	70.00%	14	78.38%	29	84.85%	28	207
gesamt		63		132		104		16		35		33	390

Table 8: Part-time employment in the non-scientific area (including scientific administration; excluding trainees, interns and assistants) (GFZ without RIFS as at 31.01.2023)